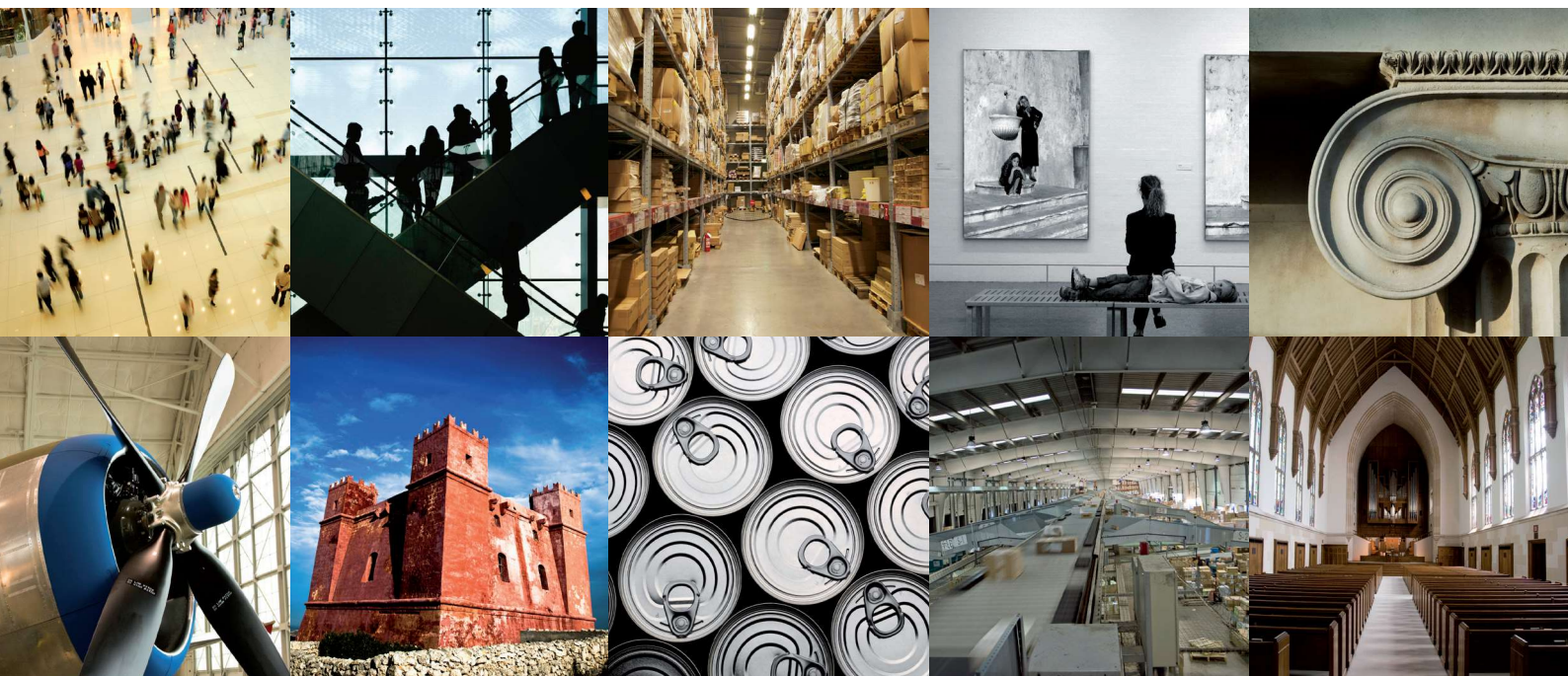


# thefirebeam™

## Motorised reflective optical beam smoke detector with low level control

Developed to overcome the problems of old outdated technology in beam detection, this motorised beam now means that beam detection can now be used reliably to produce cost effective solutions for protecting large open areas.

Building movement and accessibility have in the past, made beam detection unreliable, difficult, time consuming to commission and hard to maintain, but now by using the advanced motorised technology of thefirebeam unreliability is no longer a problem. thefirebeam will self align itself to the centre of the reflector when commissioning and will automatically keep alignment when building movement occurs. This intelligent motorisation will mean **less false alarms** therefore saving time, resources, reputations and ultimately money.



Atriums Conference Halls Churches Museums Warehousing Manufacturing Facilities Airports Schools Historic buildings  
Sports Centres Stables Leisure facilities Food processing Roof Voids Shopping Malls Exhibition halls Aeroplane Hangers

# The new **firebeamXtra** raises the bar even higher and further than anyone else

Everyone knows and use the **firebeam** and it has become the industry standard that all other beams are measured against. But not content with that we have introduced the new **firebeamXtra** that keeps all the advanced technology of the **firebeamplus** but now boasts a world beating range of **160 metres!**

## New revised optics

This new design incorporates all the leading features we have honed over the years and with the latest advanced components we have produced a **VdS** approved fully compliant to **EN 54-12:2015** beam detector that out performs all other beams in the market place.

## What is the advantage of **160 metres?**

In this ever increasingly cost conscious world using the **firebeamXtra** will mean you need only purchase one beam instead of two when covering distances over 100m. Not only will the cost of hardware be significantly less but also the **cost of installing will also be significantly reduced.**

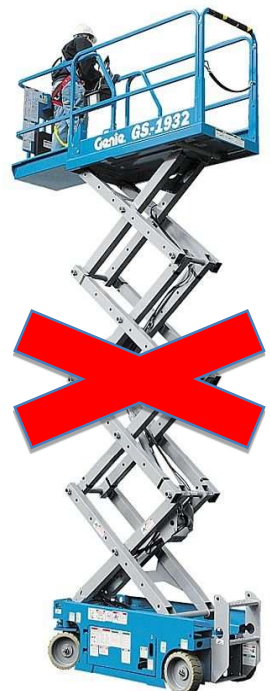


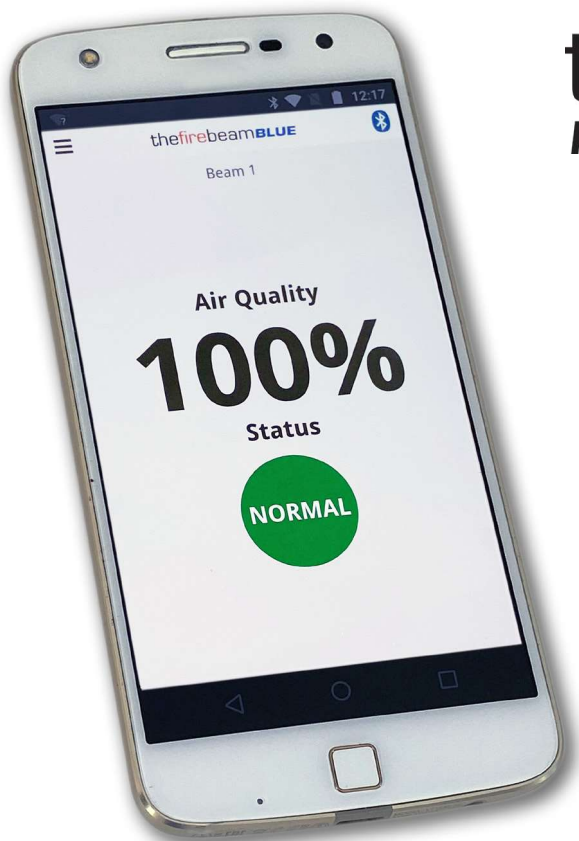
### The importance of low level control

Using a low level controller along with motorisation has the advantage of you being able to commission, adjust and maintain the beam from the safety and ease of ground level.

Sometimes you need to adjust or maintain your beam and they are mounted at height. The inconvenience and sheer cost of high lift equipment is an important consideration when designing and commissioning a fire system.

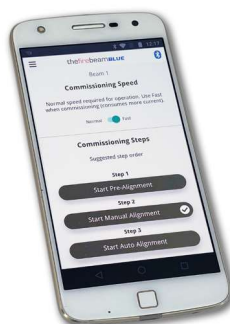
**Low level control will save you thousands!**





thefirebeam<sup>TM</sup>  
protection system BLUE

THE FUTURE IN  
YOUR HANDS



# thefirebeam**BLUE**

*‘Industry leading  
self aligning motorised technology’*

*‘**160** metre range’*

*‘App based Bluetooth phone operation’*

*‘Vds Approved’*

*‘Saves time and money’*

## thefirebeam**BLUE** App



Now available from

